

Write your name here

Surname

Other names

Pearson Edexcel
International
Advanced Level

Centre Number

--	--	--	--	--

Candidate Number

--	--	--	--

Geography

International Advanced Level

Paper 3: Contested Planet

Monday 15 January 2018 – Afternoon

Time: 2 hours

Paper Reference

WGE03/01

You must have:

Resource Booklet (enclosed)

Total Marks

--

Instructions

- Use **black** ink or ball-point pen.
- **Fill in the boxes** at the top of this page with your name, centre number and candidate number.
- Answer **ALL** questions in Section A, **ONE** question in Section B and **ONE** question in Section C.
- Answer the questions in the spaces provided
– *there may be more space than you need.*
- Calculators may be used.

Information

- The total mark for this paper is 90.
- The marks for **each** question are shown in brackets
– *use this as a guide as to how much time to spend on each question.*

Advice

- Read each question carefully before you start to answer it.
- Check your answers if you have time at the end.

Turn over ►

P54979A

©2018 Pearson Education Ltd.

1/1/1/1



Pearson

SECTION A: Compulsory topics and synoptic question

Answer ALL questions in this section. Write your answers in the spaces provided.

A1: Atmosphere and Weather Systems

1 Using Figure 1, explain the weather conditions for Rennes and Sousse.

(10)

.....

.....

.....

.....

.....

.....

.....

.....

.....

.....

.....

.....

.....

.....

.....

.....

.....

.....

.....

.....

.....

.....

.....

.....

.....

.....

.....

.....

DO NOT WRITE IN THIS AREA

DO NOT WRITE IN THIS AREA

DO NOT WRITE IN THIS AREA

DO NOT WRITE IN THIS AREA



DO NOT WRITE IN THIS AREA

DO NOT WRITE IN THIS AREA

DO NOT WRITE IN THIS AREA

DO NOT WRITE IN THIS AREA

DO NOT WRITE IN THIS AREA

DO NOT WRITE IN THIS AREA

Handwriting practice area with ten horizontal dotted lines.

(Total for Question 1 = 10 marks)



A2: Biodiversity Under Threat

2 (a) Using Figure 2, suggest reasons for the different trends in forest cover between 1990 and 2015.

(10)

Area with horizontal dotted lines for writing the answer.

DO NOT WRITE IN THIS AREA

DO NOT WRITE IN THIS AREA

DO NOT WRITE IN THIS AREA

DO NOT WRITE IN THIS AREA

DO NOT WRITE IN THIS AREA

DO NOT WRITE IN THIS AREA



DO NOT WRITE IN THIS AREA

DO NOT WRITE IN THIS AREA

DO NOT WRITE IN THIS AREA

DO NOT WRITE IN THIS AREA

DO NOT WRITE IN THIS AREA

DO NOT WRITE IN THIS AREA

Blank writing area with horizontal dashed lines.



(b) Evaluate the relative importance of physical and human factors in influencing levels of biodiversity.

(15)

Area with horizontal dotted lines for writing the answer.

DO NOT WRITE IN THIS AREA

DO NOT WRITE IN THIS AREA

DO NOT WRITE IN THIS AREA

DO NOT WRITE IN THIS AREA

DO NOT WRITE IN THIS AREA

DO NOT WRITE IN THIS AREA



DO NOT WRITE IN THIS AREA

DO NOT WRITE IN THIS AREA

DO NOT WRITE IN THIS AREA

DO NOT WRITE IN THIS AREA

DO NOT WRITE IN THIS AREA

DO NOT WRITE IN THIS AREA

Handwriting practice area with 25 horizontal dotted lines.

(Total for Question 2 = 25 marks)



Synoptic question

You should use relevant knowledge and understanding from Unit 1 and Unit 3 (topics A1 and A2) to answer this question.

3 To what extent are worldwide population trends contributing to increased risks from extreme weather hazards?

(15)

.....

.....

.....

.....

.....

.....

.....

.....

.....

.....

.....

.....

.....

.....

.....

.....

.....

.....

.....

.....

.....

.....

.....

.....

.....

.....

DO NOT WRITE IN THIS AREA

DO NOT WRITE IN THIS AREA

DO NOT WRITE IN THIS AREA

DO NOT WRITE IN THIS AREA

DO NOT WRITE IN THIS AREA

DO NOT WRITE IN THIS AREA



DO NOT WRITE IN THIS AREA

DO NOT WRITE IN THIS AREA

DO NOT WRITE IN THIS AREA

DO NOT WRITE IN THIS AREA

DO NOT WRITE IN THIS AREA

DO NOT WRITE IN THIS AREA

Handwriting practice area with horizontal dotted lines.

(Total for Question 3 = 15 marks)

TOTAL FOR SECTION A = 50 MARKS



SECTION B: Resource options

Answer ONE question in this section – EITHER Question 4 OR Question 5.

If you answer Question 4 put a cross in the box .

Indicate which question you are answering by marking a cross . If you change your mind, put a line through the box and then indicate your new question with a cross .

Write your answers in the spaces provided.

B1: Energy Security

- 4** (a) Using Figure 3, suggest reasons for the projected changes in global energy demand.

(5)

.....

.....

.....

.....

.....

.....

.....

.....

.....

.....

.....

DO NOT WRITE IN THIS AREA

DO NOT WRITE IN THIS AREA

DO NOT WRITE IN THIS AREA

DO NOT WRITE IN THIS AREA

DO NOT WRITE IN THIS AREA

DO NOT WRITE IN THIS AREA



(b) Using named examples, assess the importance of different players in making countries energy secure.

(15)

Area with horizontal dotted lines for writing.

DO NOT WRITE IN THIS AREA

DO NOT WRITE IN THIS AREA

DO NOT WRITE IN THIS AREA

DO NOT WRITE IN THIS AREA

DO NOT WRITE IN THIS AREA

DO NOT WRITE IN THIS AREA



Handwriting practice area with horizontal dotted lines.

DO NOT WRITE IN THIS AREA

DO NOT WRITE IN THIS AREA

DO NOT WRITE IN THIS AREA

DO NOT WRITE IN THIS AREA

DO NOT WRITE IN THIS AREA

DO NOT WRITE IN THIS AREA

(Total for Question 4 = 20 marks)



If you answer Question 5 put a cross in the box .

B2: Water Conflicts

5 (a) Using Figure 4, suggest reasons for the projected changes in global water demand.

(5)

.....

.....

.....

.....

.....

.....

.....

.....

.....

.....

.....

.....

.....

.....

.....

.....

DO NOT WRITE IN THIS AREA

DO NOT WRITE IN THIS AREA

DO NOT WRITE IN THIS AREA

DO NOT WRITE IN THIS AREA

DO NOT WRITE IN THIS AREA

DO NOT WRITE IN THIS AREA



(b) Using named examples, assess the extent to which transboundary water supplies always lead to conflict between players.

(15)

Area with horizontal dotted lines for writing.

DO NOT WRITE IN THIS AREA

DO NOT WRITE IN THIS AREA

DO NOT WRITE IN THIS AREA

DO NOT WRITE IN THIS AREA

DO NOT WRITE IN THIS AREA

DO NOT WRITE IN THIS AREA



DO NOT WRITE IN THIS AREA

DO NOT WRITE IN THIS AREA

DO NOT WRITE IN THIS AREA

DO NOT WRITE IN THIS AREA

DO NOT WRITE IN THIS AREA

DO NOT WRITE IN THIS AREA

Handwriting practice area with 20 horizontal dotted lines.

(Total for Question 5 = 20 marks)

TOTAL FOR SECTION B = 20 MARKS



SECTION C: Economic and Political options

Answer ONE question in this section – EITHER Question 6 OR Question 7.

If you answer Question 6 put a cross in the box .

Write your answers in the spaces provided.

C1: Superpower Geographies

6 To what extent is military power the most important factor in explaining the global influence of superpowers?

(20)

.....
.....
.....
.....
.....
.....
.....
.....
.....
.....
.....
.....
.....
.....
.....
.....
.....
.....
.....
.....
.....
.....

DO NOT WRITE IN THIS AREA

DO NOT WRITE IN THIS AREA

DO NOT WRITE IN THIS AREA

DO NOT WRITE IN THIS AREA

DO NOT WRITE IN THIS AREA

DO NOT WRITE IN THIS AREA



DO NOT WRITE IN THIS AREA

DO NOT WRITE IN THIS AREA

DO NOT WRITE IN THIS AREA

DO NOT WRITE IN THIS AREA

DO NOT WRITE IN THIS AREA

DO NOT WRITE IN THIS AREA

Lined writing area with horizontal dashed lines.



Handwriting practice area with 20 horizontal dotted lines.

(Total for Question 6 = 20 marks)

DO NOT WRITE IN THIS AREA

DO NOT WRITE IN THIS AREA

DO NOT WRITE IN THIS AREA

DO NOT WRITE IN THIS AREA

DO NOT WRITE IN THIS AREA

DO NOT WRITE IN THIS AREA



If you answer Question 7 put a cross in the box .

C2: Bridging the Development Gap

7 To what extent are small-scale, bottom-up projects the best way to reduce the development gap?

(20)

Area with horizontal dotted lines for writing the answer.

DO NOT WRITE IN THIS AREA

DO NOT WRITE IN THIS AREA

DO NOT WRITE IN THIS AREA

DO NOT WRITE IN THIS AREA

DO NOT WRITE IN THIS AREA

DO NOT WRITE IN THIS AREA



P 5 4 9 7 9 A 0 1 9 2 4

Lined writing area with horizontal dashed lines.

DO NOT WRITE IN THIS AREA

DO NOT WRITE IN THIS AREA

DO NOT WRITE IN THIS AREA

DO NOT WRITE IN THIS AREA

DO NOT WRITE IN THIS AREA

DO NOT WRITE IN THIS AREA



DO NOT WRITE IN THIS AREA

DO NOT WRITE IN THIS AREA

DO NOT WRITE IN THIS AREA

DO NOT WRITE IN THIS AREA

DO NOT WRITE IN THIS AREA

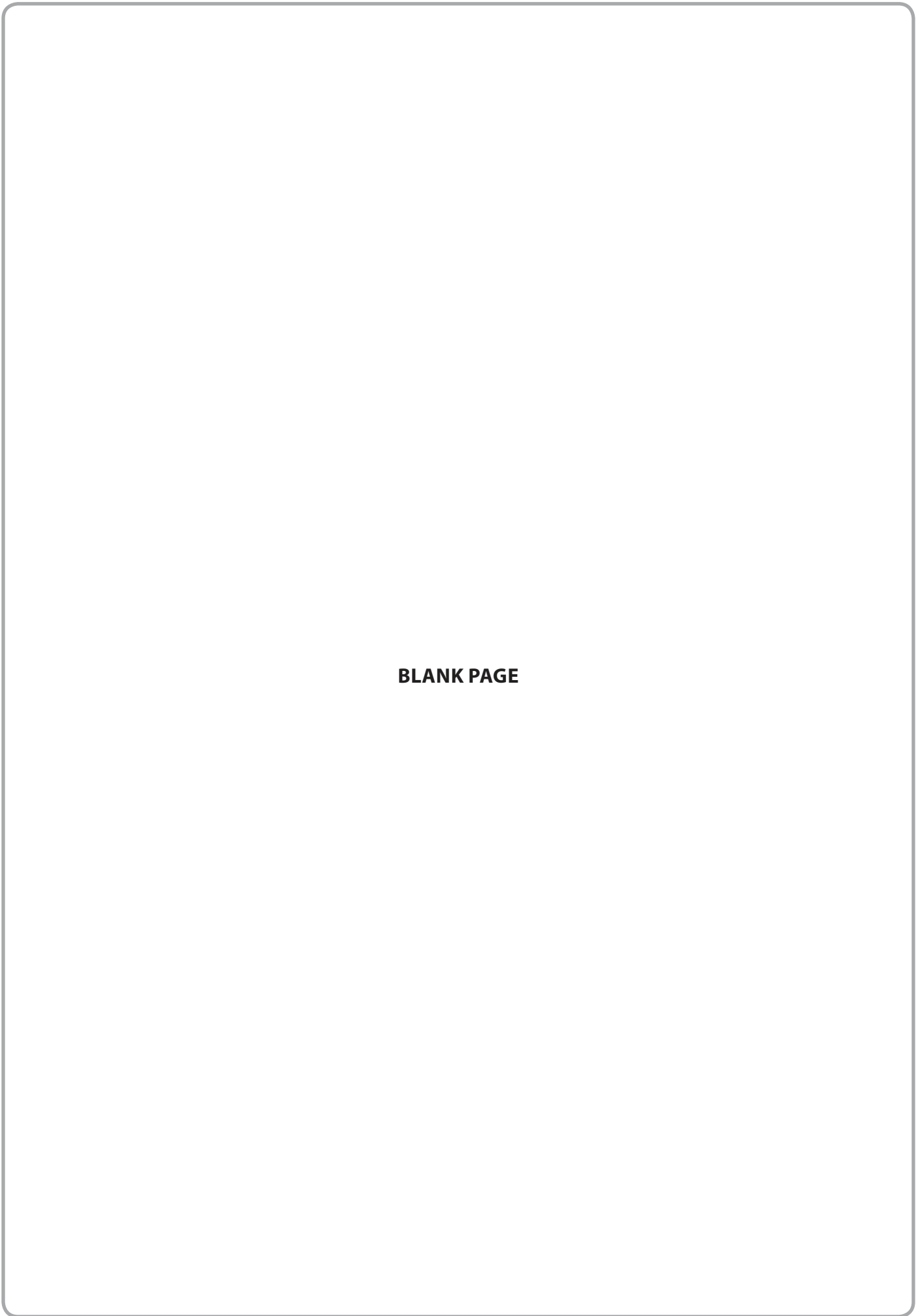
DO NOT WRITE IN THIS AREA

Blank writing area with horizontal dotted lines.

(Total for Question 7 = 20 marks)

TOTAL FOR SECTION C = 20 MARKS
TOTAL FOR PAPER = 90 MARKS





BLANK PAGE

DO NOT WRITE IN THIS AREA

DO NOT WRITE IN THIS AREA

DO NOT WRITE IN THIS AREA

DO NOT WRITE IN THIS AREA

DO NOT WRITE IN THIS AREA

DO NOT WRITE IN THIS AREA



DO NOT WRITE IN THIS AREA

DO NOT WRITE IN THIS AREA

DO NOT WRITE IN THIS AREA

DO NOT WRITE IN THIS AREA

DO NOT WRITE IN THIS AREA

DO NOT WRITE IN THIS AREA

BLANK PAGE



DO NOT WRITE IN THIS AREA

DO NOT WRITE IN THIS AREA

DO NOT WRITE IN THIS AREA

BLANK PAGE



Pearson Edexcel
International Advanced Level

Geography

International Advanced Level
Paper 3: Contested Planet

Monday 15 January 2018 – Afternoon
Resource Booklet

Paper Reference

WGE03/01

Do not return this Resource Booklet with the question paper.

P54979A

©2018 Pearson Education Ltd.

1/1/1/1



Turn over ►

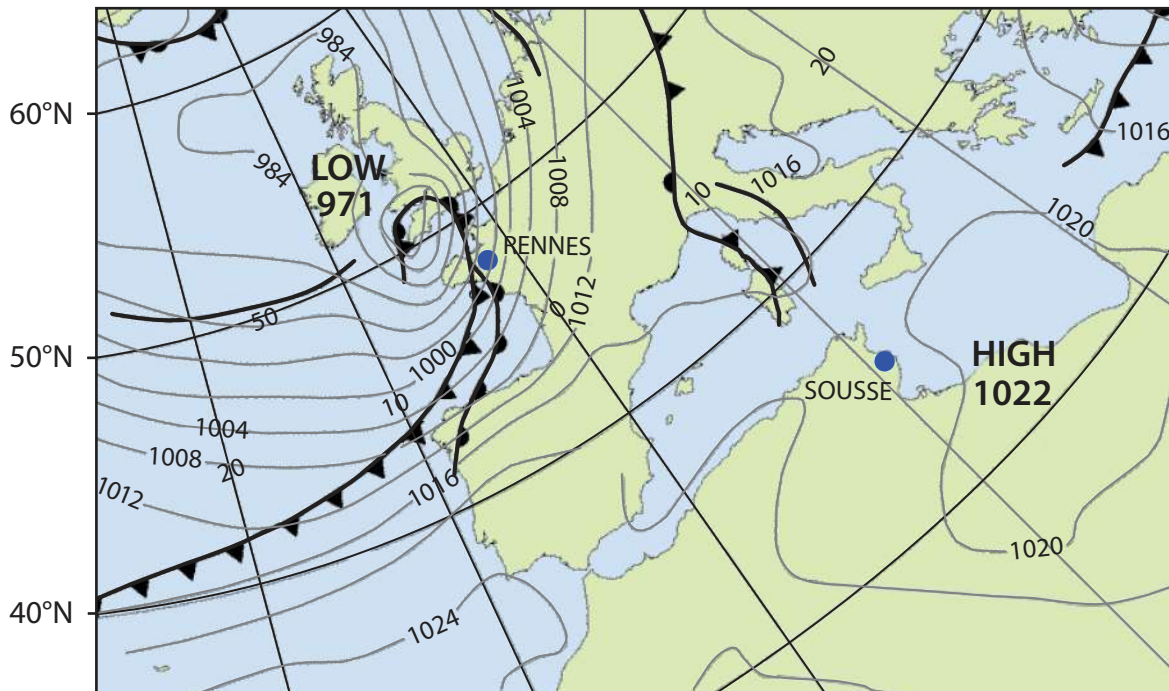


Pearson

SECTION A

A1: Atmosphere and Weather Systems

The following resource relates to Question 1.



Key

- 1000— Isobar (pressure in millibars)
- Occluded front
- Warm front
- Cold front
- Trough

Weather data	RENNES	SOUSSE
Temperature	6°C	18°C
Wind direction	SW	ENE
Wind speed	30 kmh	5 kmh
Precipitation	Heavy rain	None
Cloud	Thick, low	None

Figure 1

A synoptic chart and weather data for 1pm on 28th March 2016

A2: Biodiversity Under Threat

The following resource relates to Question 2.

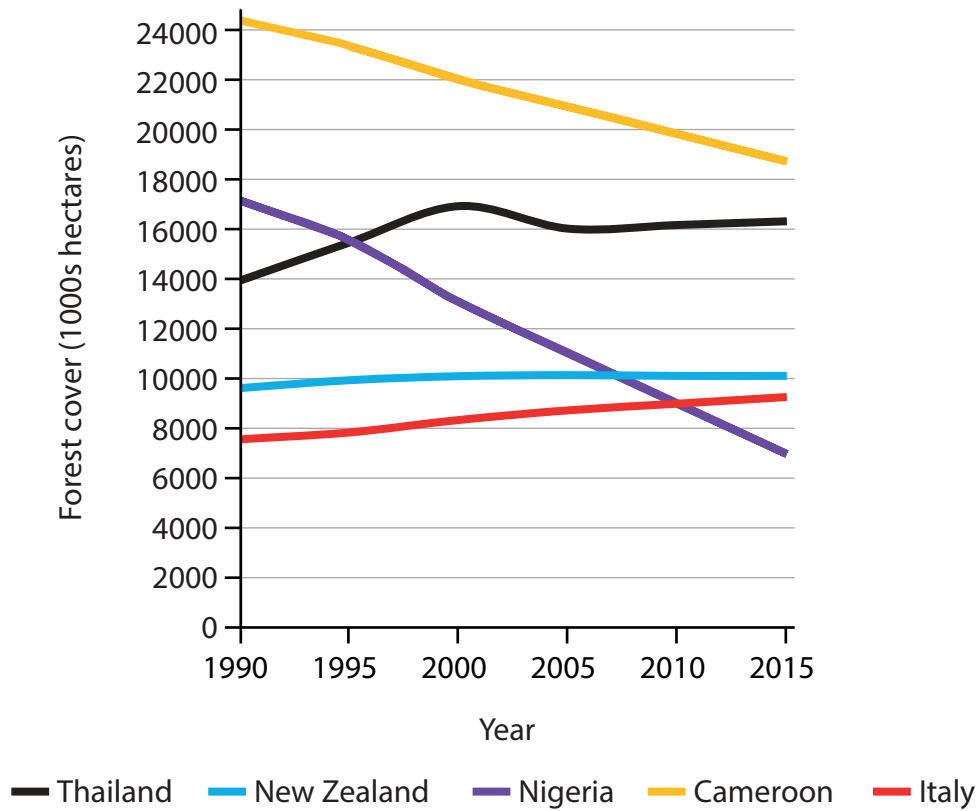


Figure 2

Change in forest cover between 1990 and 2015

SECTION B

B1: Energy Security

The following resource relates to Question 4.

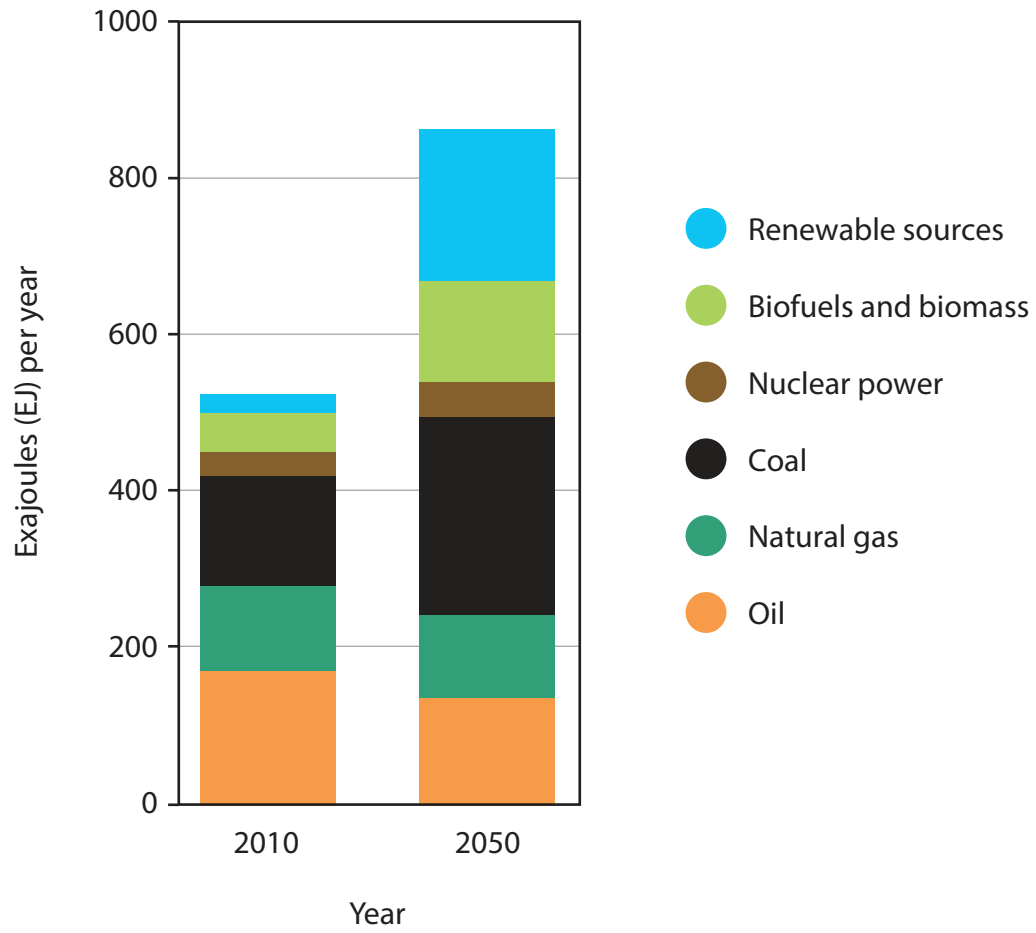


Figure 3

Global energy demand in 2010 and projected to 2050

B2: Water Conflicts

The following resource relates to Question 5.

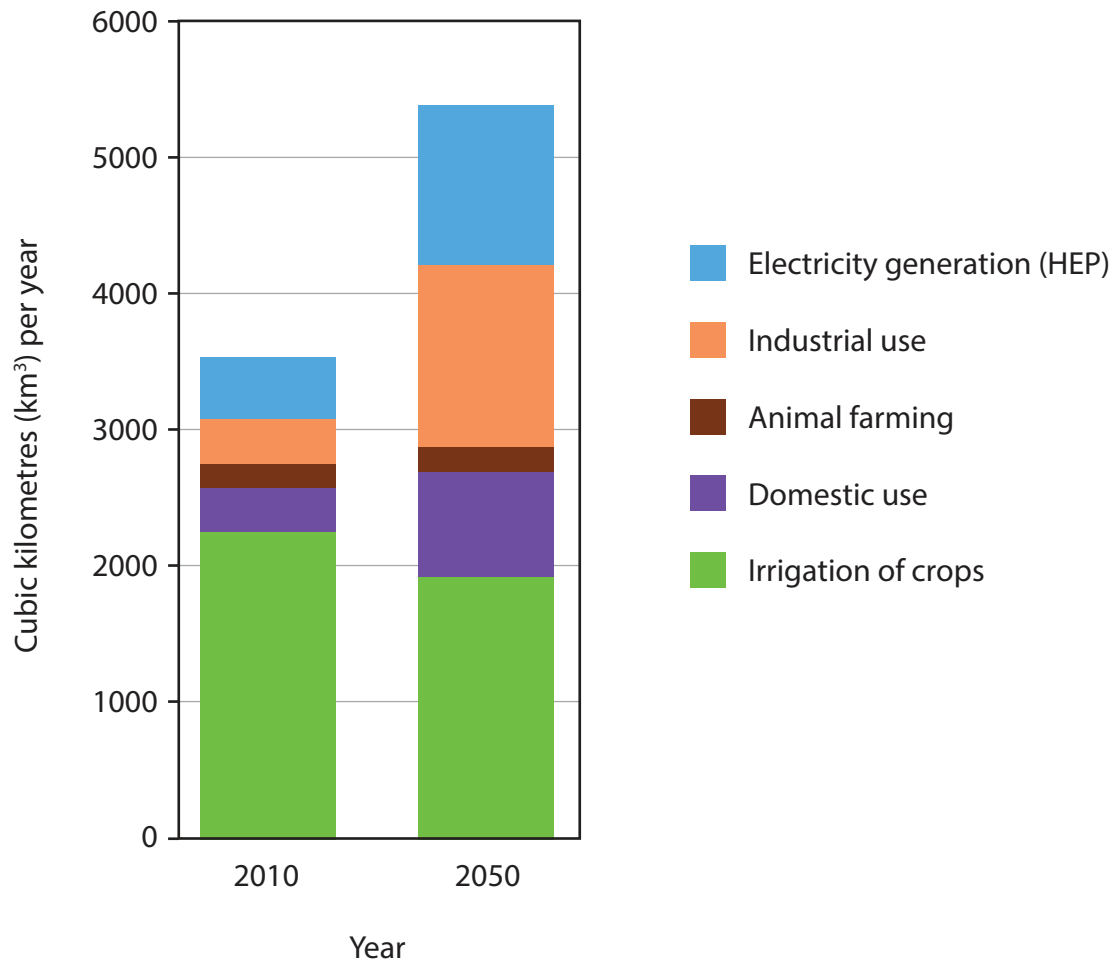


Figure 4

Global water demand in 2010 and projected to 2050



BLANK PAGE



BLANK PAGE



BLANK PAGE

